



SPIRIT AND TRADITION
2023 NEW ZEALAND TOUR
TECHNICAL REQUIREMENTS

1. CULTURAL PROTOCOLS

Dancers of Damelahamid are an Indigenous performing arts company with strong cultural traditions from their Gitksan and Cree cultural background. Some cultural protocols to follow when presenting Dancers of Damelahamid are:

Welcome/Acknowledgment to Territory

- Presenters/venues arrange for a welcome to territory by a local First Nation/Elder when the company arrives
- an acknowledgement of traditional territory before the start of each presentation

Smudging

- Dancers of Damelahamid perform a smudging ceremony onstage before all performances, which involves the burning of sweetgrass. Venue and presentation staff are invited to participate. Work inside the theatre will pause during the ceremony. The presenter must notify the company if venue circumstances will not allow this ceremony. Often venues simply temporarily turn off the fire system during smudging.

Regalia

- The company does not use costumes. The traditional dress is referred to as Regalia. It includes traditional dresses, tunics, blankets, shawls, masks, drums, rattles, whistles, and dance screens.
- These regalia represent ancestors and ceremony and can not be handled by non-company members
- Where local union requires wardrobe staff, company members will instruct them in how to assist with regalia before/after each performance and any changes during the performance.
- Time must be given for the company to first pack regalia before strike.

2. GENERAL PROVISIONS

2.1 House Management

- Acknowledgement of traditional territory/welcome to territory by local First Nation/Elder
- Running time is approximately 53 minutes (can be shortened)
- There is no intermission

2.2 Company Size

2.3 Dancers of Damelahamid travels with 9 performers (7 adults 2 children), one director and one Technician.

- Dancers of Damelahamid require accommodation for 10 persons: 5 single rooms, one double occupancy room for a couple and one room for 2 adults and 2 children.

2.4 Transportation

- Dancers of Damelahamid will arrange its own flights unless otherwise agreed upon with the presenter.
- Local transportation arrangements made by the presenter are appreciated.

2.5 Hospitality

- Access to fresh water and ice is requested in the theatre at all times.
- Coffee, tea, fresh or dried fruit and light snacks is appreciated while in the theatre.

2.6 Internet Access

- The Presenter will provide Dancers of Damelahamid with access to wireless internet at the venue.

2.7 Access

- All performing areas and dressing rooms must be cleared before arrival.

3. VENUE REQUIREMENTS

3.1 Performance Area

- 12m wide x 10m deep stage (10mx8m minimum) measured from the main curtain (plaster line) to the back wall and between leg curtains. *If your venue's stage does not meet this minimum, please phone or email the company Production Manager to discuss adjusting the performance for your space.*

3.2 Floor

- The stage surface must be sprung. The company will not perform on concrete.
- If available, the stage must be covered with a Marley dance floor, taped with PVC Tape prior to arrival. If dance floor is not available the company is willing to discuss alternate options.

3.3 Backstage

- Six 0.6mX1.8m tables: 4 tables located on stage right, 2 stage left
- Clothing rack on wheels
- "blue" lights- for regalia tables and crossover
- Sweep and mop all backstage floors – crossover, backstage, and under the regalia tables
- Clean walls where the regalia tables and clothing rack will be

3.4 Masking/Soft Goods

- Black legs and borders are required. There should be at least 3 legs per side
- A black backdrop is required upstage, allowing for a crossover behind.
- There should be at least one masked entrance from the stage to the dressing rooms.

3.5 Rigging

- Rigging height of 4.5m +
- The venue must be equipped with a full lighting grid with positions over the stage as well as in the FOH.
- A rigging position is required 1-2m from the back wall for 3.5m x 6m centre projection screen, which the Artist will provide if venue does not have a suitable one.
- The company tours with floor standing fabric flats as follows:
One 6m wide x 2.3m High centre flat

3.6 Warmup Requirements

- If available, access to the stage for 1 to 1.5 hours for rehearsal, any time prior to the first performance. If the stage is not available, an alternate rehearsal space is appreciated.

3.7 Dressing Rooms

- 2 dressing rooms are required for 6-9 performers.
- Dressing Rooms must have cold and hot running water, washrooms, mirrors, chairs, tables, clothing racks and hangers, and adequate lighting.
- Dressing Rooms must be able to be secured during rehearsal and performance times

3.8 Heating

- The stage and dressing rooms must be heated to 21°C (70°F) prior to the dancers' arrival

3.9 First Aid

- The Presenter must provide access to a stocked first aid kit and readily available ice packs during all activities within the engagement.

4. LIGHTING SPECIFICATIONS

Please refer to LX Plot and Magic sheet

- Spirit and Tradition is designed to set up quickly and can utilize standard house plots designed for dance performance.
- Spirit and Tradition can work in a festival style presentation scenario
- Spirit and Tradition is capable of same day set up and performance
- Maximum number of performances is 2 per day

5. AUDIO VISUAL SPECIFICATIONS

5.1 PA System

- Dancers of Damelahamid require a professional quality stereo sound system in good working order, proving clear, undistorted, evenly distributed sound proportionate to venue capacity.
- 4 onstage monitors
- A professional quality audio console with at least 6 Channels
- 1 Wireless Handheld mic

5.2 Communication System

- Dancers of Damelahamid requires a Clear-Com or similar party line intercom system with a minimum of 2 positions: venue technician and backstage. Additional positions may be required for additional venue operators or FOH depending on venue working rules.
- A backstage page and program sound system to include dressing rooms and other support areas, when available

5.3 Audio/Video Playback

- Dancers of Damelahamid travels with a laptop for A/V playback in QLab

5.4 Video Equipment

Dancers of Damelahamid requires the following equipment:

- 1 main projection screen 6m Wide x 3.5m High hung on a pipe and rigged so the bottom is 2m off the stage and 1-2m from upstage wall (cyclorama with masking drawn in to 6.m wide can substitute as a projection screen)
- One 8K+ lumen XGA projector for the main screen with HDMI input in the control booth (company can provide Video equipment if venue does not have a suitable system)

6. WARDROBE

6.1 General

- Dancers of Damelahamid travel with all required regalia. Regalia will be used during all technical and dress rehearsals.
- If local working rules require the presence of a Wardrobe head, they must be present for Load-In, Dress Rehearsal, Show Call and Strike.

7. CARTAGE

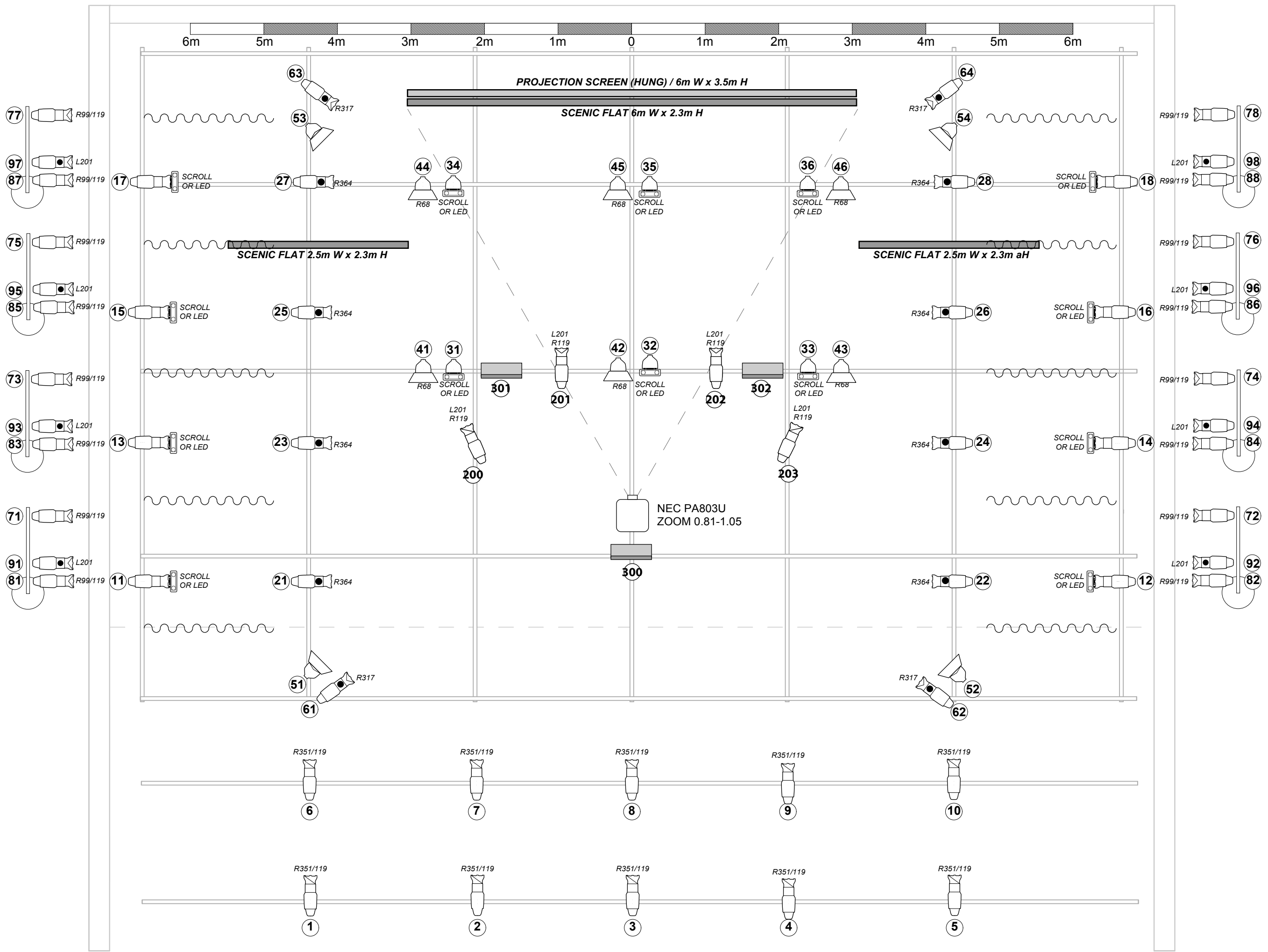
7.1 Cartage

- Dancers of Damelahamid makes its own cartage arrangements.
- Venue staff may need to be available to send or receive or store cartage on behalf of the company.

SPIRIT AND TRADITION CASE LIST

#	Dance	Case Type	L (cm)	W (cm)	H (cm)	Total (cm)	Weight (kg)*
R1	Beaver	Pelican Storm im2950	79.5	51.8	31	162.3	25
R2	Dragonfly	Pelican Storm im2975	79.5	51.8	39.4	170.7	30
R3	Flicker/Sea Lion	Pelican Storm im2975	79.5	51.8	39.4	170.7	30
R4	Grasshopper	Pelican Storm im2975	79.5	51.8	39.4	170.7	30
R5	Orca Whale	Pelican 0370 Protector	67.3	67.3	64.1	198.7	30
R6	Salmon	Pelican Storm im3075	84.6	62	49	195.6	35
R7	Mt Goat	Pelican Storm im3075	84.6	62	49	195.6	35
R8	Orca Whale	Pelican 1730 Protector	95.3	68.9	36.5	200.7	40
S1	Set	Pelican 1615 Air	82.8	46.7	28	157.5	25

* Weights are approximate



**DANCERS of
DAMELAHAMID**

SPIRIT AND TRADITION

**GENERIC LX
& STAGE PLAN**

ANDY GRENIER / ANDY MORO

Scale 1:48 // PRINT A3 size

- 26° ELLIPSOIDAL
- 36° ELLIPSOIDAL
- 50° ELLIPSOIDAL
- PAR OR FRESNEL
- DMX TRIP BOX
- NEC PA803U
ZOOM 0.81-1.05
- SCROLL
(OR LED)
- DOORS
- GOBO

FRONTS - R351/119 - CH 1-10

1 2 3 4 5
6 7 8 9 10

TIPS - SCROLL/LED - CH 11-18

11 12 13 14
15 16 17 18

TIPS - R364 / BRKUP - CH 21-28

21 22 23 24
25 26 27 28

BAX - SCROLL/LED - CH 31-36

31 32 33
34 35 36

BAX - R68 - CH 41-46

41 42 43
44 45 46

CROSS/WASH - R98 - CH 51-54

51 52
53 54

CROSS/GOBO - R317 - CH 51-54

61 62
63 64

BKDRPS - L201/R119 - CH 200-203

200 201 202 203

BOOM MID - R99/119 - CH 71-78

71 72 73 74
75 76 77 78

BOOM SHIN - R99/119 - CH 71-78

81 82 83 84
85 86 87 88

BOOM O/SHIN - L201 - CH 91-98

91 92 93 94
95 96 97 98

SELENOID DROPS - CH 300-302

300 301 302