

BAILIWICK

THEATER TERRA WILL STRIVE TO REDUCE THE TOURING FOOTPRINT
AND TECHNICAL REQUIREMENTS FOR PRESENTERS GOING FORWARD
FOR NORTH AMERICA.

This rider is for the ideal situation, but please know we can adapt to almost any theatre and technical capacities - we would just like to hear from you about any limitations so that we can alter equipment / crew / time / space needed.



“Rapunzel” Technical Rider

The proposed lightning plot and fly cues are the ideal situation - however, we are able to operate the show on a smaller footprint when a venue does not have sufficient lighting equipment and / or a fly system

Schedule:

Arrival crew:	6 hours before showtime <i>unless agreed otherwise with venue</i>
Estimated load-in:	5,5 hours
Arrival cast:	2,5 hours before showtime
Soundcheck:	1 hour before showtime including a run of the flightbars
Estimated load out:	2 hours

The show is approximately 60 minutes long, without an intermission.
The load out will start immediately after the show and will take approximately 2 hours.

Company: 4 actors, 1 crew

Dressing rooms: 2 dressing rooms
Please have your green room open for the company

Catering: No wishes, we will arrange this ourselves.

Crew: The crew of Morssinkhof Terra Theatrical consists of 1 crewmember/operator.
We ask for 2 technicians from the theatre for the load in and load out and during the show.
During the show the 2 technicians from the theatre are needed for flight bar changes and to operate the curtain at the beginning of the show.

To be arranged by the theatre:

Intercom system:	Yes. For our operators to communicate with the technicians from the theatre and to give the flight bar cues during the show
Passenger elevator:	Yes. To focus the lighting.
Borders:	Yes, according to the flight bar list.
Curtain:	Yes, at the beginning of the show.
Ballet floor:	Yes, please have it ready on the floor before arrival of the company.
Production desk:	Yes.
Grand piano or pit:	No
Horizon + battery:	Yes, with the colors (L716, L165 L134, L142). It is preferred that the colors are prepared before arrival of the company. If horizon is LED, please contact us to discuss with the light operator
Black gauze cloth:	Yes.
Follow spot:	No
Lighting fixtures:	3x sixbar from theatre and 8 x 2 kW fresnell,
Fog:	Yes, we use a hazer.
Extra:	The company would like to use the green room for lunches and dinners.

Sound: The company has an own audio console and 4 channels (channel 40-43), 2 monitors on tripod and a UTP reel from the stage to the production desk. We would like to make use of the present sound system.
If sound system is not present or if you expect that the present sound system will not suffice, please contact us immediately.

Lighting: 32A on left. 2 free DMX channel from production desk to stage left. We will use our own moving lights. These will be hung in the grid on flight bars, above the set.
Also, we would like to use the already present lights at the theatre. All dimmers will be operated via DMX by company's lighting board. For needed lighting fixtures, please see attached lighting plot.

Special Effects: **NONE**

Act changes: There are **10** set fly bar changes.

Notes: There will be spots made backstage for the storage of props and quick changes. Blue working lights are needed back stage for quick changes. Dressing room for 4 people, preferably 2 rooms.

Transport: The crew travels with a box truck of 15 m³.
Height 2.8 meters
Width 2.2 meters
Length 7.5 meters
Our truck does not have a tailgate or ramp. If expected to be an issue, please contact us beforehand.
Also a small car with which the cast travels with.

If you have any questions, please let us know.

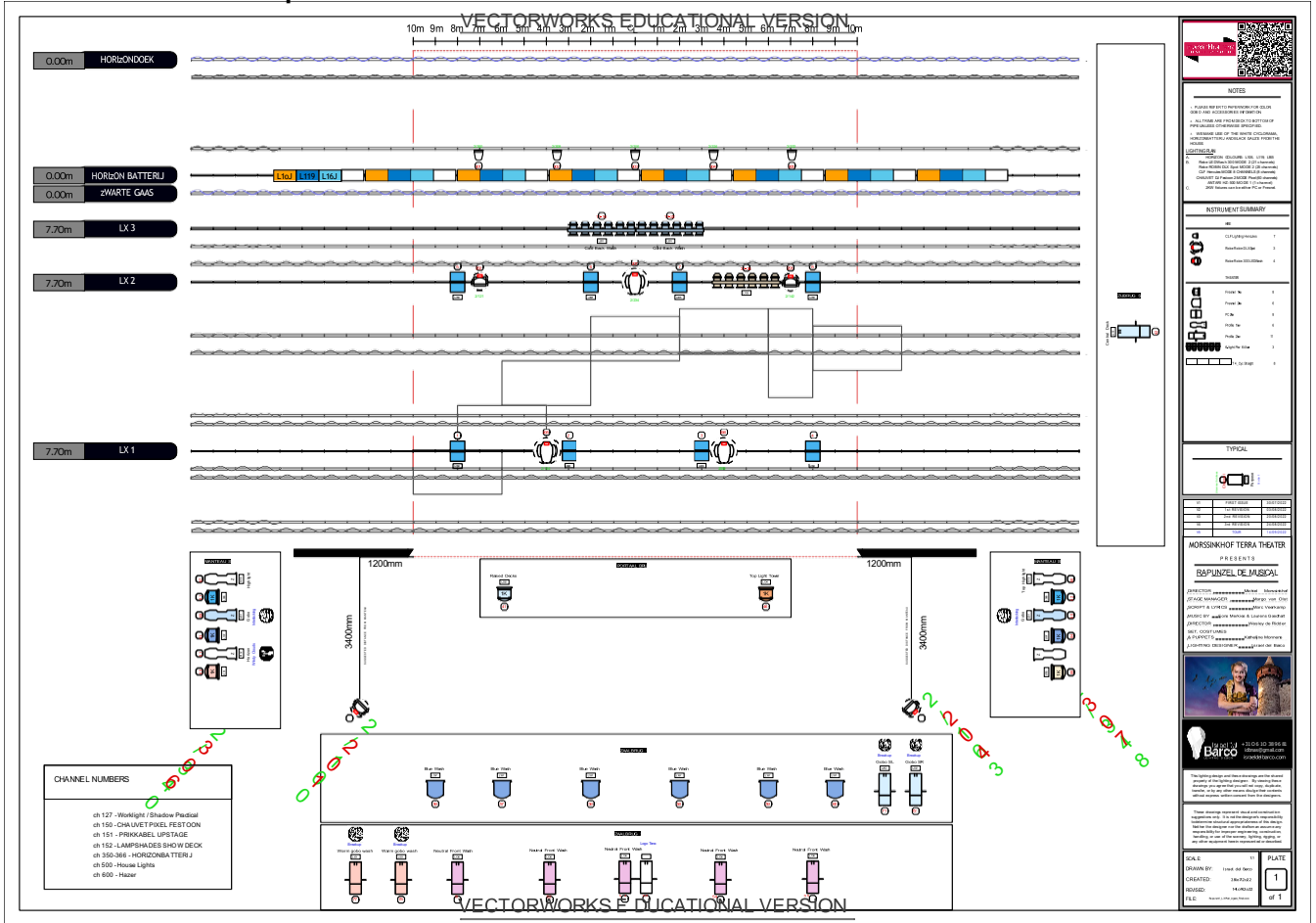
CONTACT:

Production Manager: **Margo van Olst**
Morssinkhof Terra Theaterproducties BV
Postjesweg 1, eerste verdieping
1057 DT Amsterdam
margo@morssinkhofterra.nl
+31 6 390 032 93

Attachments: Lighting plot, standard grid/fly bar list, act changes and mark list.



ATTACHMENT 1 : LIGHTING PLOT – Rapunzel



**ATTACHMANET 2:
FLY BAR LIST – Rapunzel**

KAPLIJST RAPUNZEL V5

Trek	Afstand KK	Decornaam	Hoog M	Tussen M	Laag M
1	0,50				
2	0,70	Prikkabel 1 (Pixel)	16,25	12,05	9,05
3	0,90	Touwen A (1x)			9,00
4	1,10	Fries			10,90
5	1,30	Wolk	12,15		7,15
6	1,50				
7	1,70	Touwen B (2x)			7,70
8	1,90	Fries			10,80
9	2,10	Poten			9,00
10	2,30				
11	2,50	Lx 1			7,70
12	2,70				
13	2,90				
14	3,10	Touwen C (2x)			8,60
15	3,30	Fries			11,00
16	3,50	Poten + Touwen D (2x)			9,00
17	3,70				
18	3,90				
19	4,10				
20	4,30	Banner	16,40		8,10
21	4,50				
22	4,70				
23	4,90	Fries			10,00
24	5,10	Poten + Touwen E (2x)			9,00
25	5,30				
26	5,50				
27	5,70		15,00		8,40
28	5,90	Prikkabel 2			
29	6,10				
30	6,30	Lx 2			7,70
31	6,50				
32	6,70				
33	6,90	Fries			
34	7,10	Poten			
35	7,30				
36	7,50	Lx 3			7,70
37	7,70				
38	7,90	Zwart Gaas			
39	8,10				
40	8,30				
41	8,50				
42	8,70	Fries			
43	8,90				
44	9,10				
45	9,30	Horizonbatterij			
46	9,50				
47	9,70				
48	9,90	Poten			
49	10,10				
50	10,30				
51	10,50				
52	10,70				
53	10,90				

**BIJLAGE 3:
ACT CHANGES FLY BARS – Rapunzel**

Changementenlijst Rapunzel de musical					
CUE	TIJD	TREK	VAN merk	NAAR merk	OPMERKING
PRESET 0.0		Wolk	HOOG	LAAG	
1	15 sec.	Wolk	LAAG	HOOG	
2	10 sec.	Wolk	HOOG	LAAG	
3	10 sec.	Lampjes Wolk	HOOG LAAG	LAAG HOOG	DELAY 2 sec.
4	10 sec.	Lampjes	LAAG	TUSSEN	
5	10 sec.	Lampjes	TUSSEN	HOOG	
6	5 sec.	Banner	HOOG	LAAG	
7	8 sec.	Wolk Banner	HOOG LAAG	LAAG HOOG	DELAY 5 sec.
8	8 sec.	Wolk	LAAG	HOOG	
9	30 sec.	Lampjes	HOOG	LAAG	
10	20 sec.	Lampenkapjes	HOOG	LAAG	