



“Rapunzel”

Canada Tour – 2025

Technical Rider: Version 1.0 26-02-2025

CONTACTS:

Production:

Marc Ramaekers
Theater Terra
marc@stagecenter.nl
+31 6 26 62 51 08

Technical:

Jurriaan Boerstoeel
jurriaanboerstoeel@gmail.com
+31 6 57 20 50 79

PLEASE NOTE: ALL INFORMATION SUBJECT TO CHANGE, Please always refer to version number in case of questions

Dear reader,

Thank you for receiving our show at your theater. We are looking forward to a great time in Canada and playing our show in your beautiful theatres.

In this document we try to provide you with all the technical information and requirements for our show. We understand that not everything we ask might be possible to arrange, however we are very helpful to work out a solution. Please don't hesitate to contact us in case of questions or if anything is not clear.

Thanks in advance for taking the time to read through our documentation.

We can't wait to play our shows in Canada!



Time schedule:	Arrival time crew: 6 hours before showtime <i>Estimated setup time:</i> 5 hours Arrival time cast: ca 2,5 hours before showtime Soundcheck: 1 hour before showtime. WITH FLYBARS Estimated load-out time: 2 hours
	The show's runtime will be about 60 minutes WITHOUT intermission. Load-out will start immediately after the end of show and will take around 2 hours.
Company :	4 actors, 1 technician, 1 stagemanager, 1 production
Dressing rooms:	We'd like to use 2 dressing rooms please. We'd also please like to use the green room.
House crew:	We'd request at least 2 house technicians upon our arrival into the venue until the end of the load-out. During show we need 1 (or more in case of manual flybars) house technician to operate the flybar cues and 1 to operate the curtain at the start of the show.

GENERAL TECHNICAL REQUIREMENTS

To be arranged by the theatre:

Intercom system:	We'd like to use intercom to communicate between FOH and stage and to call our flycues and curtain cues.
Genie/lift:	Yes, for lights focus
Borders and legs:	Yes, according to flybarlist. Opening of stage at 10 meters please (if possible)
Curtain:	Yes, curtain is closed during doors. It will open at the beginning of the show.
Ballet floor:	Yes, please laid out and taped before the arrival of Theater Terra Crew.
Cyclorama:	Yes, suggested colors: (L106, L139, 2x L119). Please prepare this upon arrival(the exact arrangement can be found in our LX Plot) In case of LED-Cyclorama we'd prefer to receive one (1) DMX-channel per color
Black gauze:	Yes, please!
Follow spot:	No
Lighting fixtures:	4x sixbar and 4x PC-Spot We need xlr and power cables for the 4x Robe 150 spots we will bring.

Fog:

We'd like to use your hazer

Other:

Our cast and crew would like to use the green room for lunch.

OTHER TECHNICAL INFORMATION

Sound:

We bring:
-1x Yamaha DM3 Digital Mixer
-4x Deity wireless microphone
-1x QLab computer

We'd request from the theatre:
-The usage of the house PA System
-2x monitors in first border (on stand or flown)
-4x analog xlr for our wireless mics
-6x analog xlr for outputs (L,R,C,S, 2x monitors)

Lighting:

We bring:
-1x Zero FLX Lighting board
-4x Robe 150 moving light (without dmx and power cables)
-2x festoon light

We'd request from the theatre:
-DMX connection
-additional lights (4x sixbar, 4x PC-Spot, cyclorama), please see lighting plot for details
-House lights (front lighting etc.)

Stage decks:

We need a total of 9 stage decks in the following heights (noted in cm):

-1x 20
-2x 40
-1x 60
-1x 80
-4x 100

If these heights are not available, we prefer to use the next closest height. Thanks in advance.

Special Effects

NO

Flycues

There will be 11 fly-cues
We will bring our own rigging (steels, clamps) for some props we need to fly. We will bring safety certificates.

Remarks:

We need some room off-stage for props and costume changes.
We'd like blue light (or anything that works for your theatre) in the off stage area to prevent tripping etc.

Transport:

We travel with a U-Haul Van

Please provide parking space for our Van and for the cast vehicle.

In case of questions, please don't hesitate to contact us. We are always helpful to find the best solution possible!



CONTACTS:

Production:

Marc Ramaekers
Theater Terra
marc@stagecenter.nl
+31 6 26 62 51 08

Technical:

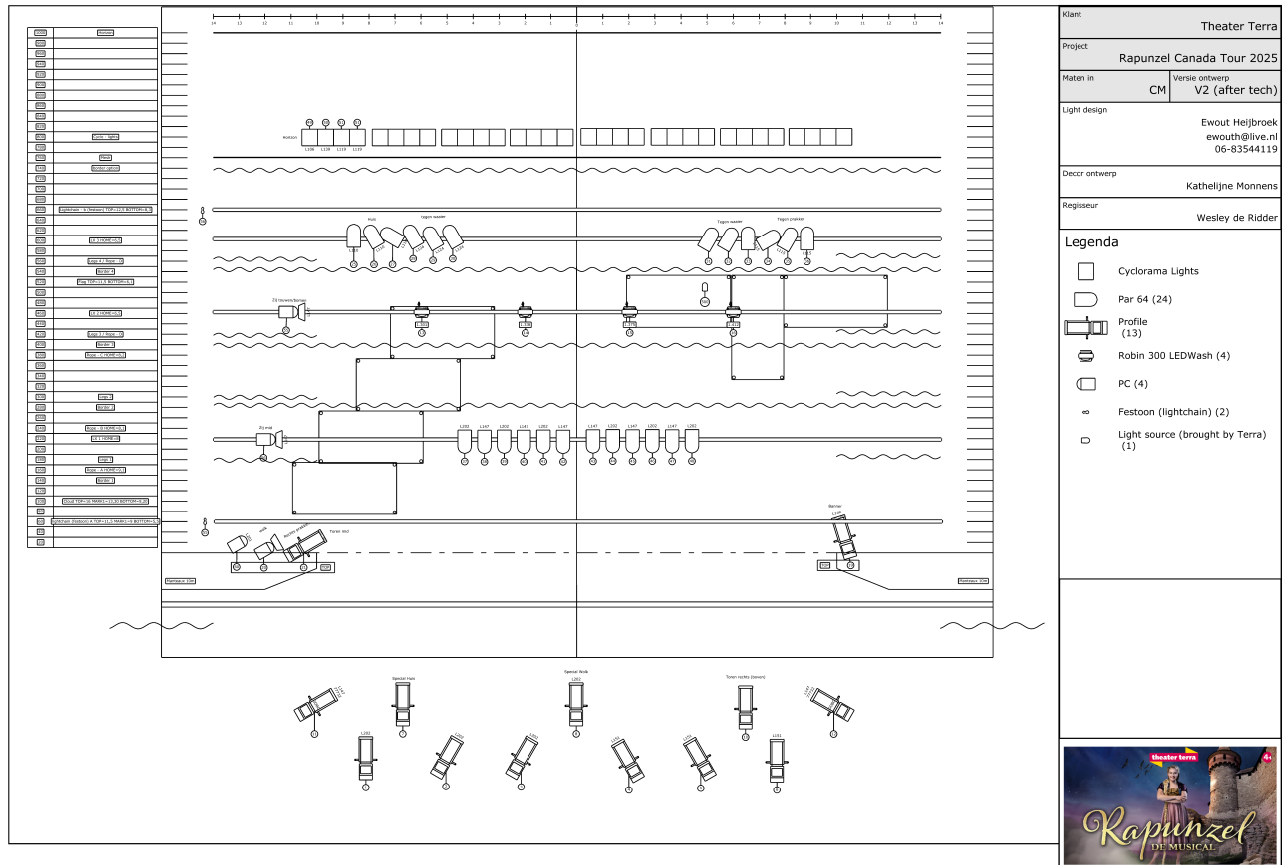
Jurriaan Boerstael
jurriaanboerstael@gmail.com
+31 6 57 20 50 79

Attachments:

Lighting plot, flybar list, flycue list

theater terra

ATTACHMENT 1 : LIGHT PLOT – Rapunzel



ATTACHMENT 2 : FLY BAR LIST – Rapunzel

Flybar list RAPUNZEL CANADA Version 26-02-2025				
Flybar	Position (cm)	Name	Top mark (m)	Middle mark (m)
1	0,20			
2	0,40			
3	0,60	Festoon 2	11.39	9.06
4	0,80			
5	100	Cloud	15.73	13.2
6	110			
7	120			
8	140	Border		
9	160	Rope - A	9.17	
10	180	Legs		
11	200			
12	220	LX 1	8.0	
13	240	Rope - B	8.18	
14	260			
15	280	Border		
16	300	Legs		
17	320			
18	340			
19	360			
20	380	Rope - C	8.27	
21	400	Border		
22	420	Legs + Rope - D		
23	440			
24	460	LX 2	6.50	
25	480			
26	500			
27	520	Flag	11.35	
28	540	Border		
29	560	Legs + Rope - E		
30	580	LX 3	6.50	
31	600			
32	620	Cyclo-Lights		
33	640			
34	660			
35	680	Border		
36	700	Legs		
37	720	Festoon 2	12.40	
38	740			
39	760	Mesh		
40	780	Fond		
41	800			
42	820	Cyclorama		
43	840			
44	860			
45	880			
46	900			
47	920			
48	940			
49	960			
50	980			
51	1000			
52	1020			
53	1040			

ATTACHMENT 3 FLY CUE LIST – Rapunzel

Flycue List Rapunzel the musical VERSION 26-02-2025			
CUE	Time	Flybar	FROM mark
PRESET 0.0		Cloud	
1	15 sec.	Cloud	BOTTOM
2	10 sec.	Wolk	MIDDLE
3	10 sec.	Festoon A	TOP
		Cloud	BOTTOM
4	10 sec.	Festoon A	BOTTOM
5	7 sec.	Festoon A	MIDDLE
	7 sec.	Cloud	TOP
6	5 sec.	Flag	TOP
7	13 sec.	Cloud	MIDDLE
	8 sec.	Flag	BOTTOM
8	8 sec.	Cloud	BOTTOM
9	8 sec.	Cloud	MIDDLE
10	20 sec.	Festoon A	TOP
11	15 sec.	Festoon B	TOP